



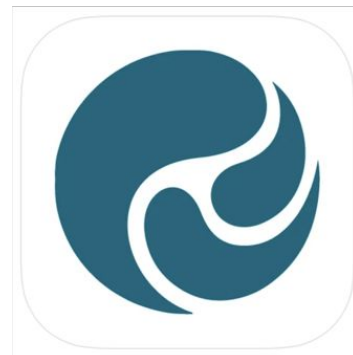
Download the Hero App



At Reporoa Primary School we use the Hero by LINC-ED app to communicate school news and information and to distribute progress and achievement reports.

Please make sure that you download the app and turn your notifications on so that you don't miss important news and information!

Hero by LINC-ED





Account Set Up



Sign in to your Hero account

Follow the steps below to view your child's learning.

Select the Log in link below to go to the Hero App



LOG IN VIA A BROWSER

Select "New User"

Your account will be set up by your school using the email address that you provided when you enrolled your children, use this address to request a password.

Add your email address

Select the "Request Password Link"

Follow the link

This will take you to a secure page to enter your chosen password.

Check your email

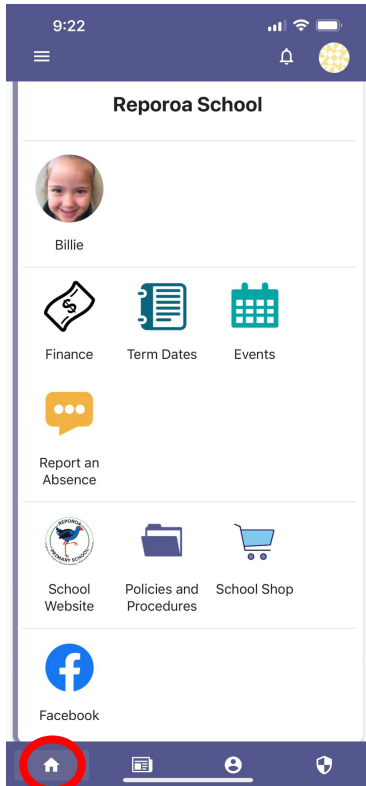
Hero will send you an email with a link to follow.

If you have problems logging in, please check with your school to make sure they have the correct details for you.

Follow these instructions to create and sign in to your Hero account. The instructions and more help from Hero can be accessed at the following website: <https://www.linc-ed.com/parents>



Home Page



○ The Home Page

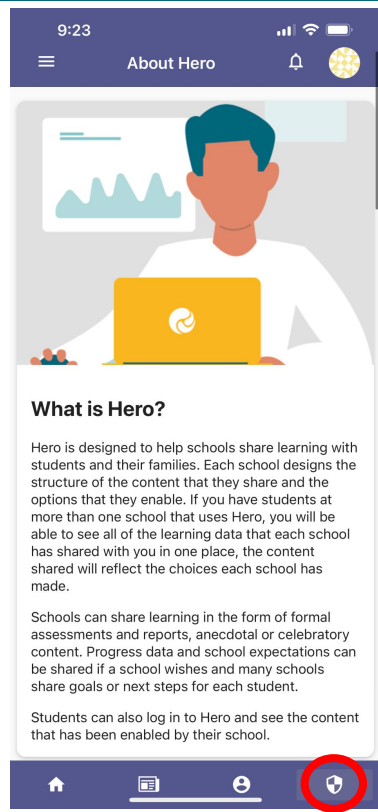
This page provides you quick access to a range of websites and links for Reporoa Primary School.

From here you can access many things like your finance statements, the school website and facebook.

From here you can also very easily report absences to the school. This is recommended if your child is absent from school as it streamlines the communication process and allows us to ensure that your child's records are accurate.



About Hero

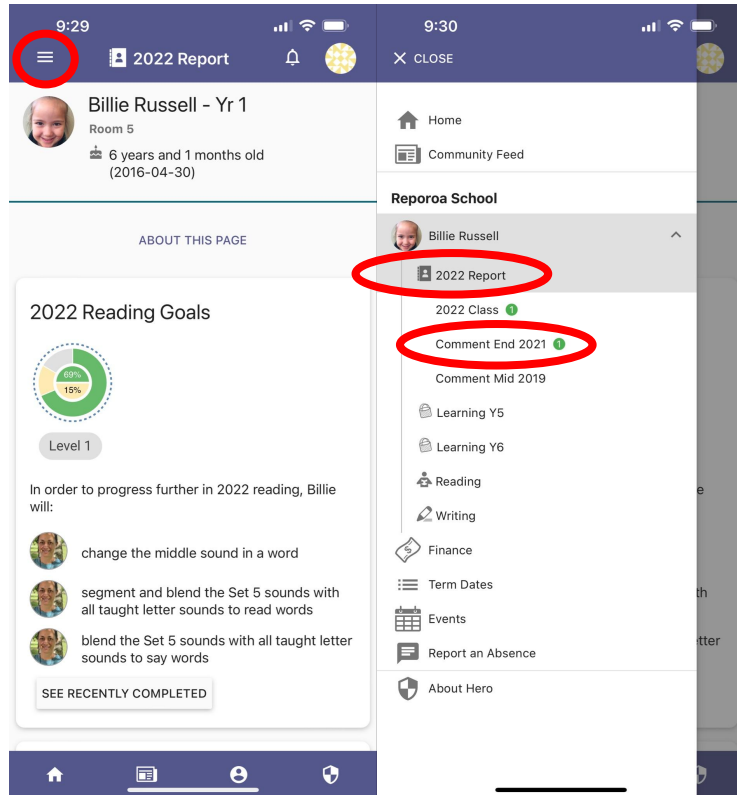


About Hero

The About Hero page has information about what Hero is and some data and privacy details.



Hero Reporting



Our digital reports provide you with personalised information about your child's progress and achievement in Reading, Writing and Number.

These slides will show you how to read your child's report.

- To access your child's report and comments click on the 3 lines in the top left corner.
- To access your child's progress graphs and goals click on 2022 Report
- To access your child's report comment click on Comment (date).



Understanding The Data



English: Reading Goals ← The subject



Radial dials showing the goals your child has completed (green) and the goals they are currently working on (buff).

A pop up showing the goals to be completed at each level. Click to view.

In order to progress further in english: reading, Elissa will:



Make connections by exploring ideas within and between texts from a range of contexts.



Understand how a range of text conventions work together to create meaning and effect.



Goals your child is currently working on, set by teachers or the child.

Evidence related to the goal. Click to view.

SEE RECENTLY COMPLETED

Goals your child has recently completed. Click to view.



Understanding The Data

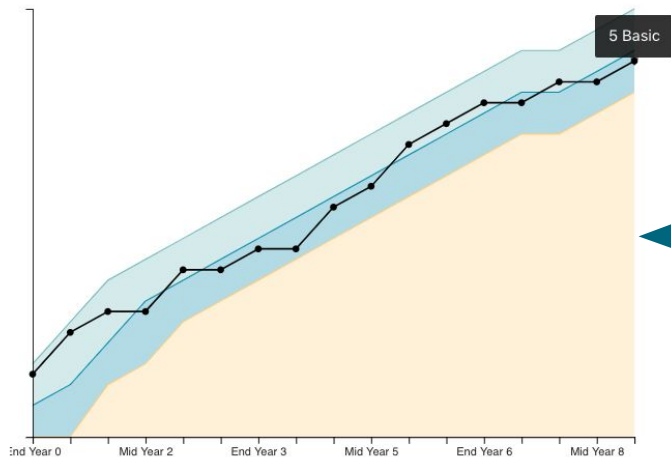


English: Reading Progress ← ← ← The subject

The current expectation for Elissa is: 4 Advanced.

Elissa is currently working **within** this expectation at 5 Basic.

Towards expectation Within expectation Beyond expectation
—●— Elissa's progress



The curriculum level your child is expected to be working within based on their school year level.

A description of how your child is progressing towards the school expectation and the level they are currently working within.

A chart showing your child's progress over time. Click to view. You can see the level each dot represents by clicking on it.



Literacy Reporting in the Junior School



As you are aware, we are changing our approach to literacy teaching and learning at Reporoa Primary School. During the transition time, our literacy reporting graphs for reading and writing are going to look a little different.

We have implemented the new approach into the junior school first - so our new '2022 Reading' and '2022 Writing' graphs only show progressions for Year 0 to Year 2. On these graphs there will be only one dot to plot your child's current learning level.

As we continue to develop goals and implement a structured literacy approach in the senior school, these graphs will even out and spread through to Year 6.

If your child was at school last year, they will still have a 'Reading' and 'Writing' graph which will show historical progress data. These graphs are only for your information and will be phased out over time.



Literacy Reporting in the Junior School



Current learning level will be represented by the first dot on the '2022 Writing' and '2022 Reading' Graphs

Currently this graph only reports information to the end of Year 2. This will expand and the progressions will even out to the end of Year 6 as Structured Literacy is implemented in the senior school.



Literacy Reporting in the Junior School



Previous years' progress will show on the old 'Writing' and 'Reading' graphs. Any mid year information that is showing for your child's current year level can be ignored and you can refer to the 2022 Writing and Reading graphs for current progress information.

